



FANSHAWE
COLLEGE
LONDON • CANADA

Your future... Our programs

www.fanshawec.ca/international





Fanshawe College



Fanshawe College – your future

A true Canadian experience

Fanshawe College has celebrated more than 40 years of academic success. Attend the 6th largest public college in Canada with 15,000 full-time students and 2,000 international students from more than 60 countries.

Fanshawe is located in the beautiful “Forest City” of London, Canada with a population of more than 370,000. London is a safe student-centered community with a big city feeling.

- Two hours from Toronto and Niagara Falls
- Convenient bus system to campus
- International airport five minutes from campus
- Diverse cultural communities



“

London, Ontario is a great place for education. I studied English as a Second Language and Internet Applications and Web Development at Fanshawe College, and when I graduated, I found a job! Fanshawe College has been an unforgettable time for me. All my teachers were great and people were so friendly and kind. I don't think I'll ever have such an experience again.

”

Insu Mun (Korea)

Internet Applications and Web Development





Fanshawe College

Your educational pathway

Degrees, diplomas and certificates:
it's your choice.

Fanshawe College has more than 110 programs:

- One-year college certificates
- Two- and three-year diplomas
- Four-year applied bachelor degrees
- One-year post-graduate college certificates
- University transfer with Canadian, Australian, Irish and American universities

Career paths to success:

- Applied Science and Technology
- Building Technology
- Business
- Contemporary Media
- Design
- Health Sciences and Nursing
- Human Services
- Language and Liberal Studies
- Information Technology
- Public Safety
- Tourism and Hospitality
- Transportation Technology

Job-ready skills are yours, in just one year, when you register for a graduate certificate program. Select from one of 18 certificate programs, each delivering advanced career training that is in demand.

www.fanshawec.ca/international



Digital Media and Performance Arts



Transportation and Motive Power Manufacturing Sciences





“

I came to Fanshawe College right from high school to study Broadcast Journalism and in two years, I've learned more than I could have ever imagined. Thanks to the guidance I received from my colleagues, classmates, and professors, I graduated on the President's Honour Roll and won an award for the best talk show for my work on a show about the College President at the time, Dr. Howard Rundle. Truly fantastic moments in my life!

”

Victor Mario Kaisar (India)
Journalism-Broadcast



Fanshawe College

Your pathway to university

Start with a diploma... transfer to a degree!

Interested in pursuing a university degree? We offer more than 100 university partnerships. Fanshawe College credits can be transferred to universities across Canada, Australia, Ireland and the USA.

Two + Two = University Degree

Complete two years at Fanshawe and two years at university to earn your degree!

- Bachelor of Science in Nursing
- Media Theory & Production
- Business Accounting
- Hotel Management
- Food & Beverage Management
- Bachelor of Commerce (3 + 1)

Fanshawe's degree programs:

- Bachelor of Applied Technology
 - Biotechnology
- Bachelor of Applied Arts
 - Land Planning Technologies
 - Early Childhood Leadership
 - Interior Design



English as a Second Language

Canadian Universities

Western University
www.uwo.ca

University of Guelph
www.uoguelph.ca

University of Toronto
www.utoronto.ca

McMaster University
www.mcmaster.ca

York University
www.yorku.ca

University of Waterloo
www.uwaterloo.ca

Ryerson University
www.ryerson.ca

Brock University
www.brocku.ca

University of Ottawa
www.uottawa.ca

Royal Roads University
www.royalroads.ca

Carleton University
www.carleton.ca

Nipissing University
www.nipissingu.ca

For a complete list, please visit www.fanshawec.ca/university.

ESL to university: a smooth pathway

Complete Fanshawe College's Level 5 ESL with 80% and the following universities will accept your English skills with no IELTS or TOEFL:

- Western University
- Brescia University College
- Huron University College
- King's University College

Do you want to improve your English? Fanshawe College's English as a Second Language (ESL) program can help you! Study full-time in an exciting environment with expert teachers, advanced technology, and classmates from around the world. Prepare for more education, a better job, or just enjoy learning English in Canada.

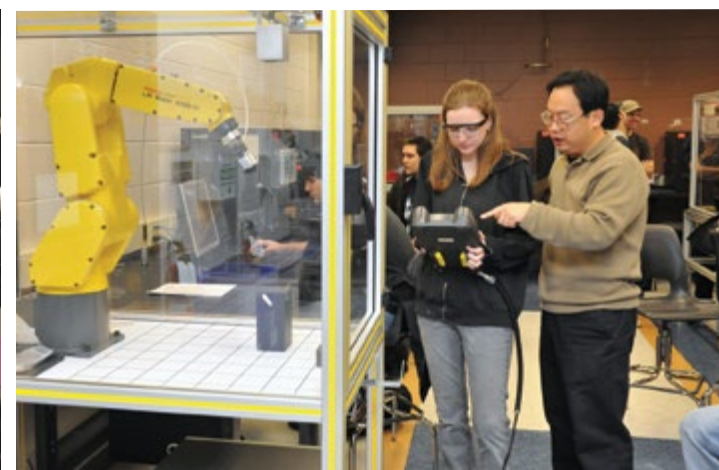


“

Earning a degree in Canada is my goal, and starting out taking ESL at Fanshawe College for eight months turned out to be the perfect plan. I really liked the apartment I shared with my Canadian roommates. English grammar was hard for me to learn, but my Fanshawe professors helped me so much. I am now in first-year university and confidently studying towards my degree in business with a major in finance, thanks to Fanshawe.

”

Zhengchong (Michael) Gu (*China*)
ESL (*English as a Second Language*)

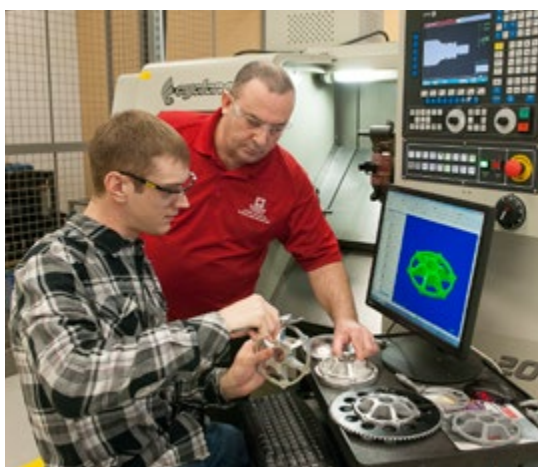




Fanshawe College

Work towards your future

A college education opens doors.

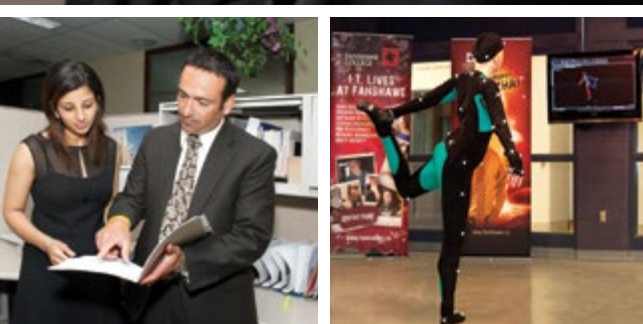


“

I would definitely recommend Fanshawe College as it helped me make a smooth transition to life in Canada and adopted me as one of its own students. The teachers were amazing and caring, making sure I understood everything so that I can apply it in a practical way in the future.

Jean Freire (*Ecuador*)
Tourism and Hospitality

”



Working Off-Campus

Your Study Permit is also your Work Permit when enrolled in a degree, diploma or certificate program for a minimum of 6 months. You can work off-campus up to 20 hours per week when attending school and up to 40 hours per week between semesters. ESL students are not allowed to work off-campus.

Co-op programs with paid work terms

Fanshawe leads Canadian colleges in cooperative (co-op) education programs, so why not combine paid work (4 months each year) with your studies? With more than 40 co-op programs, Fanshawe College has great employment opportunities with local, national and international employers that will benefit you. Experience the best combination of work and study.

Work after graduation

You may apply for a post-graduation work permit to work in Canada for up to 3 years, depending on the duration of your study. More than 140,000 Fanshawe graduates are working in their chosen careers in Canada and around the world; 90% of Fanshawe graduates get jobs within six months of graduation. Build your contacts with these employers while you are at Fanshawe College.



Fanshawe College



London living – your new home

Three student dormitories allow you to live on campus in a fully furnished suite with TV and kitchen. Your private bedroom will include Internet access and phone. Each floor has a common lounge where you can study, watch TV and relax with your new friends.

Your success – our priority

We offer support services to ensure your success.

Support services and facilities

- On-campus dormitories (1,600 rooms)
- Homestay service
- Student success advisors
- Academic counselling
- Peer tutoring
- 24-hour computer labs
- Healthcare and fitness facilities on-campus
- Pharmacy
- Bookstore and computer store

The International Student Advisor and Student Success Advisors are always available to help you in your life and learning. Conversation Partners are here to support your international experience.

The International Student Host Program matches you with a Canadian student so you can experience the adventure together.

Homestay – live with a Canadian family

You will enjoy home-cooked meals and your own private bedroom in a Canadian home. Your homestay family will involve you in Canadian social and cultural activities.



Fanshawe College found me the best Homestay family! I loved living with them in their comfortable home and learning all about Canadian life.

They helped me in so many ways, especially practicing English and encouraging me to try new activities. My favorite times were socializing with new friends on campus, shopping, having family meals, and attending dance class once a week for fun. I will never forget my Fanshawe experience.

Minji Kim (Korea)
ESL (English as a Second Language)



On-campus student residences



Residence 4 Room Suite:

Each furnished dormitory suite includes free Internet access; 4 private bedrooms (A-D); 2 bathrooms (E-F); a living room (G) and a kitchenette (H).



FANSHAWE
COLLEGE
LONDON  CANADA

 Education
au/in Canada



*Back row: Lydia Wang, Jennifer Fitzgerald, Rahul Kumar, Faith Maudsley, Bruce Wilson, Kim Rowe, Arkadiy Zhidelev,
Maria Carvajal Sarria, Joy Jia, Jake Yoon, Vivian Wang
Front row: Brianne Dos Santos, Xiaobin Yang, Jessie Shi, Stanley Carr, Wendy Curtis, Nelson Melgar, Jennifer Fowler, Saurabh Malhotra*

Fanshawe College International Services Office

Room E2025, 1001 Fanshawe College Boulevard
London, Ontario, Canada N5Y 5R6

E-mail: int@fanshawec.ca

Phone: (519) 452-4150

Fax: (519) 659-9393

Office Hours: Monday to Friday, 9 am - 4 pm

www.fanshawec.ca/international

Your Future... Our Programs

International Students



Welcome to Fanshawe College!

Fanshawe College is located in London, Canada, a large modern city in the heart of south-western Ontario. Fanshawe is the 6th largest college in Canada offering more than 110 degree, post-graduate, diploma and certificate programs. In addition, our English Language Institute prepares you for success. When you study English as a Second Language (ESL) with us, you can enter a Fanshawe College career program or apply to take a degree at Western University without further language testing. Western University is also located in the city of London, Canada.

At Fanshawe, you will be part of a vibrant campus of more than 15,000 students each year, including 2,000 international students from 60 countries. The success of our students is shown in the 90% success rate of employment after graduation.

You'll enjoy your time spent in London, Canada. It's a beautiful, clean and safe city of 370,000 people, making it the 10th largest city in Canada. Known as *The Forest City* for its abundance of trees, the city maintains more than 200 parks and has cultural and recreational facilities of all kinds. Opportunities abound for employment, active lifestyles, sports, shopping, entertainment and education.

www.fanshawec.ca/international



Apply online:
fanshawec.ca/intonline

English Admission Requirements

All programs: High School Graduation

English Requirements for Certificate or Diploma Programs:

TOEFL: 550 - PBT, 213 - CBT, 79 - iBT
IELTS: 6.0 with no band lower than 5.5

English Requirements for Health, Post-graduate or Degree Programs:

TOEFL: 570 - PBT, 230 - CBT, 88 - iBT
IELTS: 6.5 with no band lower than 6.0

English Requirements for Nursing Program:

TOEFL: 580 - PBT, 237 - CBT, 92-93 - iBT
IELTS: 7.0 with no band lower than 6.5

For program specific English requirements link to:
www.fanshawec.ca/english

English Language Evaluation (ELE) Test:
See last page for details

Tuition Fees (Canadian Dollars)

Certificate, Diploma, Degree & Post-graduate Programs for 2014/2015

Post-secondary program tuition fees range from **\$14,000 to \$15,000*** which includes some program specific fees, and also includes your student fee (health insurance & bus pass).

***Note:** These fees are approximate and subject to change. Some fees are higher for specific programs. For actual fees by program, visit:
www.fanshawec.ca/fees

Accommodation Options[†]

Homestay Services and Fees:

- Includes a private bedroom and food for three meals per day, seven days per week.
- \$750 (CDN) per month plus a one-time administration fee of \$100, must pay for two months in advance.

Residence/Dormitory On-campus:

- September to April: \$7,340 which includes a mandatory meal plan of \$1,200. Furnished suite/bedroom, kitchenette, utilities, cable television, Internet access, telephone service (free local calls) and light housekeeping.
- \$500 non-refundable deposit with application.
- May to August: \$495 per month, no meal plan.

College Townhouse:

- Share a home (beside the campus) with 4 other students.
- Similar services to residence living but no meals provided and no shared phone service.
- Standard bedroom: \$5,800 for 8 months, Smaller bedroom: \$5,540 for 8 months.

†Note: Accommodation fees are subject to change.

Fanshawe College Programs 2014-2015

DEGREE PROGRAMS (FOUR YEARS)

- Bachelor of Applied Arts
 - Early Childhood Leadership
- Bachelor of Applied Arts – Integrated Land Planning Technologies*
- Bachelor of Applied Technology
 - Biotechnology*
- Bachelor of Interior Design*
- Contemporary Media: Theory and Production (diploma + degree Brock Univ.)
- Media Theory and Production (diploma + degree Western Univ.)
- Nursing (BScN degree)

CERTIFICATE, DIPLOMA and ADVANCED DIPLOMA PROGRAMS (ONE, TWO AND THREE YEARS)

APPLIED SCIENCES

- Environmental Technology*
- Science Laboratory Technology*

ART & DESIGN

- Fashion Design*
- Fine Art
- Graphic Design
- Landscape Design*
- Fashion Merchandising*
- GIS and Urban Planning*
- Horticulture Technician*
- Interior Decorating*
- Fine Art Foundation
- Hair Stylist - wc

BUILDING TECHNOLOGY

- Architectural Technology*
- Civil Engineering Technology*
- Construction Engineering Technology (Management)*
- Construction Engineering Technician – Supervisor
- Construction Carpentry Techniques

BUSINESS & MANAGEMENT

- Business Administration – Accounting*
- Business Administration
 - Human Resources
- Business Administration
 - Leadership and Management
- Business Administration – Marketing*
- Business*
- Business – Accounting*
- Business – Entrepreneurship and Management - wc
- Business – Human Resources

- Business – Insurance*
- Business – Marketing*
- Business – Payroll & Bookkeeping*
- Business – Purchasing*
- Business – Finance*
- Office Administration – Executive*
- Office Administration – Medical
- Business Foundations
- Customer Service Fundamentals – Insurance
- Entrepreneurship
- Office Administration – General

COMPUTERS & INFORMATION TECHNOLOGY

- Computer Programmer Analyst*
- Computer Systems Technology*
- Computer Systems Technician
- Internet Applications and Web Development

CONTEMPORARY MEDIA

- Broadcasting – Radio
- Broadcasting – Television
- Interactive Media Design and Production
- Journalism – Broadcast
- Music Industry Arts
- Photography
- Theatre Arts
- Theatre Arts – Technical Production

ELECTRICAL/ELECTRONICS

- Electrical Engineering Technology*
- Electronics Engineering Technology*
- Electrical Engineering Technician
- Electromechanical Engineering Technician
- Electrical Techniques
- Electronics Engineering Technician – Industrial Controls - st
- Renewable Energies Technician - st

ENGLISH FOR INTERNATIONAL STUDENTS

- English as a Second Language – (Five levels)

GENERAL STUDIES & PREPARATORY PROGRAMS

- General Arts and Science – Two years
- General Arts and Science – One year
- Pre-Technology

HEALTH SCIENCES

- Medical Radiation Technology
- Massage Therapy

- Respiratory Therapy
- Fitness and Health Promotion
- Pharmacy Technician
- Practical Nursing
- Dental Assisting (Levels I and II)
- Pre-Health Science

HUMAN SERVICES

- Child and Youth Worker
- Developmental Services Worker
- Early Childhood Education
- Recreation and Leisure Services
- Social Service Worker
- Human Services Foundation
- Developmental Services Worker - sc, lc
- Early Childhood Education - sc, lc
- Personal Support Worker

MANUFACTURING SCIENCES

- Manufacturing Engineering Technology*
- Heating, Refrigeration & Air Conditioning Technician - wc
- Manufacturing Engineering Technician*
- Mechanical Technician: CNC/CAM* - st
- Mechanical Techniques: CNC - st
- Welding Techniques - sc, st, wc
- Mechanical Engineering Technician – Industrial Maintenance - st

PUBLIC SAFETY

- Law Clerk*
- Paramedic
- Police Foundations - wc, lc
- Protection, Security and Investigation

TOURISM & HOSPITALITY

- Culinary Management
- Food and Nutrition Management
- Golf and Recreational Club Management*
- Hospitality Management – Food and Beverage*
- Hospitality Management – Hotel*
- Tourism and Travel*
- Adventure Expeditions and Interpretive Leadership - sc
- Culinary Skills – Chef Training

TRANSPORTATION & MOTIVE POWER

- Aviation Technician, Avionics Maintenance
- Aviation Technician, Aircraft Maintenance
- Motive Power Technician (Automotive)
- Motive Power Technician (Diesel)

POST-GRADUATE CERTIFICATE PROGRAMS (ONE YEAR)

Business & Management

- Corporate Communication and Public Relations
- Human Resources Management
- International Business Management
- Logistics and Supply Chain Management
- Marketing Management
- Paralegal
- Professional Financial Services
- Project Management

Hospitality

- Artisanal Culinary Arts
- Concierge Services – Guest Relations Specialist

Media / Design

- 3D Animation and Character Design
- Advanced Filmmaking
- Audio Post-Production
- Broadcast Journalism – Television News
- Game Development – Advanced Programming
- Geographic Information Systems (GIS)
- Interactive Media Specialist
- Technical Costume Studies
- Visual Effects and Editing for Contemporary Media

Others

- Autism and Behavioural Science
- Information Security Management
- Magnetic Resonance Imaging
- Practical Elements of Mechanical Engineering

Program Listing Legend

- 1 year program (two semesters)
- 2 year program
- 3 year program
- 4 year program
- 12 month program
- 1 year graduate program

* Co-operative education program (work-study)

Programs are all delivered at the London Campus (LC) unless otherwise noted:

sc - Simcoe Campus

st - St. Thomas Campus

wc - Woodstock Campus

Apply online:
fanshawec.ca/intonline

All programs have September (Fall Term) start dates. To confirm programs with start dates for January (Winter Term) and May (Summer Term) please go this link www.fanshawec.ca/open

Work-Study (Co-op) Programs

Choose from 40 programs where you can combine paid work terms with your academic studies.

Sample of Co-op Work Options

	Sept - Dec	Jan - Apr	May - Aug
Year One	In School →	In School →	Co-op Work →
Year Two	In School →	In School →	Co-op Work →
Year Three	Co-op Work →	In School →	In School

University Transfer

Fanshawe College has transfer credit and articulation agreements with many universities in Canada and around the world. We also have a number of 2+2 and 3+1 programs offering direct entry to university.

Business Accounting (Co-op) 2+2

Years 1 & 2
Fanshawe College

Graduate with
Fanshawe Diploma

Years 3 & 4
Western University

Graduate with
Bachelor of Administrative &
Commercial Studies
(Finance & Administration)

Hotel Management (Co-op) 2+2

Years 1 & 2
Fanshawe College

Graduate with
Fanshawe Diploma

Years 3 & 4 University of
New Brunswick

Graduate with
Bachelor degree in
Applied Management
in Hospitality & Tourism

Bachelor of Commerce degree 3+1

Years 1, 2 & 3
Fanshawe College

Graduate with
Fanshawe Diploma

Year 4 Study through
Nipissing University at
Fanshawe College

Graduate with
Bachelor of Commerce degree
from Nipissing University

Work in Canada

- **Part-time Work on Campus:** You may apply to work part-time on campus. (No work permit required)
- **Working Off-Campus:** Your Study Permit is also your Work Permit when enrolled in a degree, diploma or certificate program at Fanshawe College for a minimum of 6 months. You can work off-campus up to 20 hours per week when attending school and up to 40 hours per week between semesters. ESL students are not allowed to work off-campus.
- **Co-operative Education Work Terms:** In a co-op program (paid work-study), each co-op term is 4 months.
- **Post-graduation Work Experience:** After graduation, you may apply for a post-graduation work permit to work in Canada for up to 3 years after graduation depending on the duration of your study.

Visit our website at www.fanshawec.ca/international

English as a Second Language (ESL)

Fanshawe College's ESL Program has been certified by Western University and Languages Canada as a program meeting their English standards.

Students will increase their skills in:

- Grammar > Listening
- Reading > Speaking
- Writing > Pronunciation

The ESL program at Fanshawe College will:

- Help you gain confidence to speak English for your future education or business;
- Help you prepare for standardized English testing (IELTS or TOEFL).

On-line ESL test at the following link:

fanshawec.ca/ESLquiz

English Language Evaluation (ELE) Test

The English Language Evaluation Test is a Fanshawe College test that determines your level of English. You can write this test:

1. In the last month of ESL Program Level 4.
You will need to pass this test with:
 - 65% for Business Foundation Program
 - 70% for all diploma and non-graduate certificate programs
 - 75% for graduate and degree programs
2. If you have taken your ESL Program at a different school you can write this test based the same pass level as outlined in #1 above. The cost is \$60 if you are not registered in the Fanshawe College ESL Program.

University Entrance from ESL

Bachelor Degree Programs:

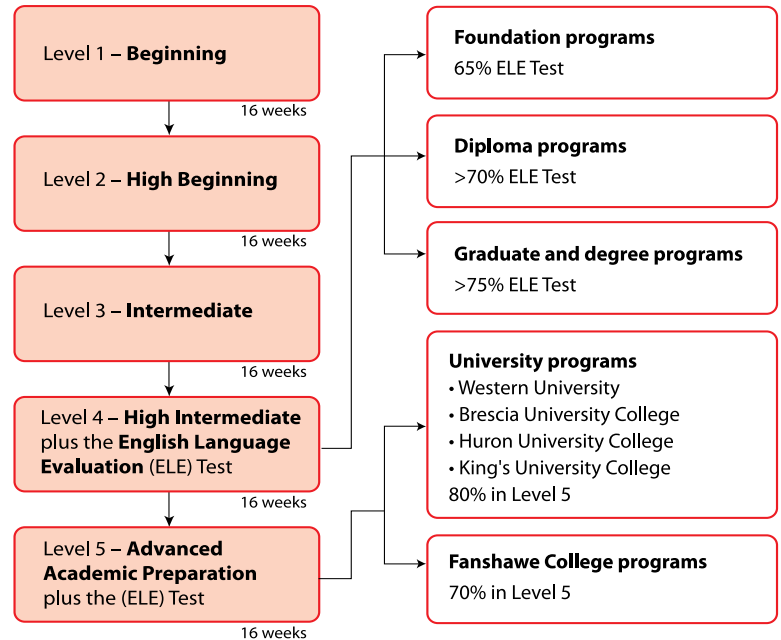
Fanshawe College can assist you to receive a "Conditional Letter of Acceptance" for any of the Bachelor degree programs at Western University, Brescia University College, Huron University College or King's University College. Fanshawe College has an agreement with these universities that you can enter the university without an IELTS or TOEFL score, as long as you have completed our ESL Program, Level 5 - Advanced Academic Preparation, with a minimum of 80% in all courses.

Master's and Doctoral Programs:

To enter a Master's or Doctoral program at university in London, Canada, the language requirement is graduation from Fanshawe College's ESL Level 5 - Advanced Academic Preparation, with a minimum 80% in all components.

For more information and application, link to:
www.fanshawec.ca/western

Fanshawe College ESL Program



ESL Tuition Fees (Canadian Dollars)*

ESL Tuition Fees				
Start/End Dates	# Weeks	Tuition Fees	Student Fees*	Total Fees
September to December				
September - December	16	\$5,000.00	\$797.88	\$5,797.88
September - October	8	\$2,500.00	\$451.94	\$2,951.94
November - December	8	\$2,500.00	\$398.95	\$2,898.95
January to April				
January - April	16	\$5,000.00	\$797.88	\$5,797.88
January - March	8	\$2,500.00	\$451.94	\$2,951.94
March - April	8	\$2,500.00	\$398.95	\$2,898.95
May to August				
May - August	16	\$5,000.00	\$797.88	\$5,797.88
May - June	8	\$2,500.00	\$451.94	\$2,951.94
July - August	8	\$2,500.00	\$398.95	\$2,898.95
Four Week Program				
Start Dates: first week of each month	# Weeks	Tuition Fees per month	Health Insurance Only	Total Fees
May to August				
May, June, July or August	4	\$1,250.00	\$68.25	\$1,318.25

Deposit: \$100 non-refundable deposit at time of application.

*Note: Student fees include: bus pass, health insurance, dental insurance, accident insurance, computer lab access. These fees are approximate and subject to change. Exact fees are determined for each specific program. For current fees by program, visit our website at: www.fanshawec.ca/fees.

ESL Start Dates

Start Dates for 2014: June 30, July 28, September 2, October 27

Start Dates for 2015: January 12, March 9, May 11, June 8, July 6, August 4, September 8, November 2